






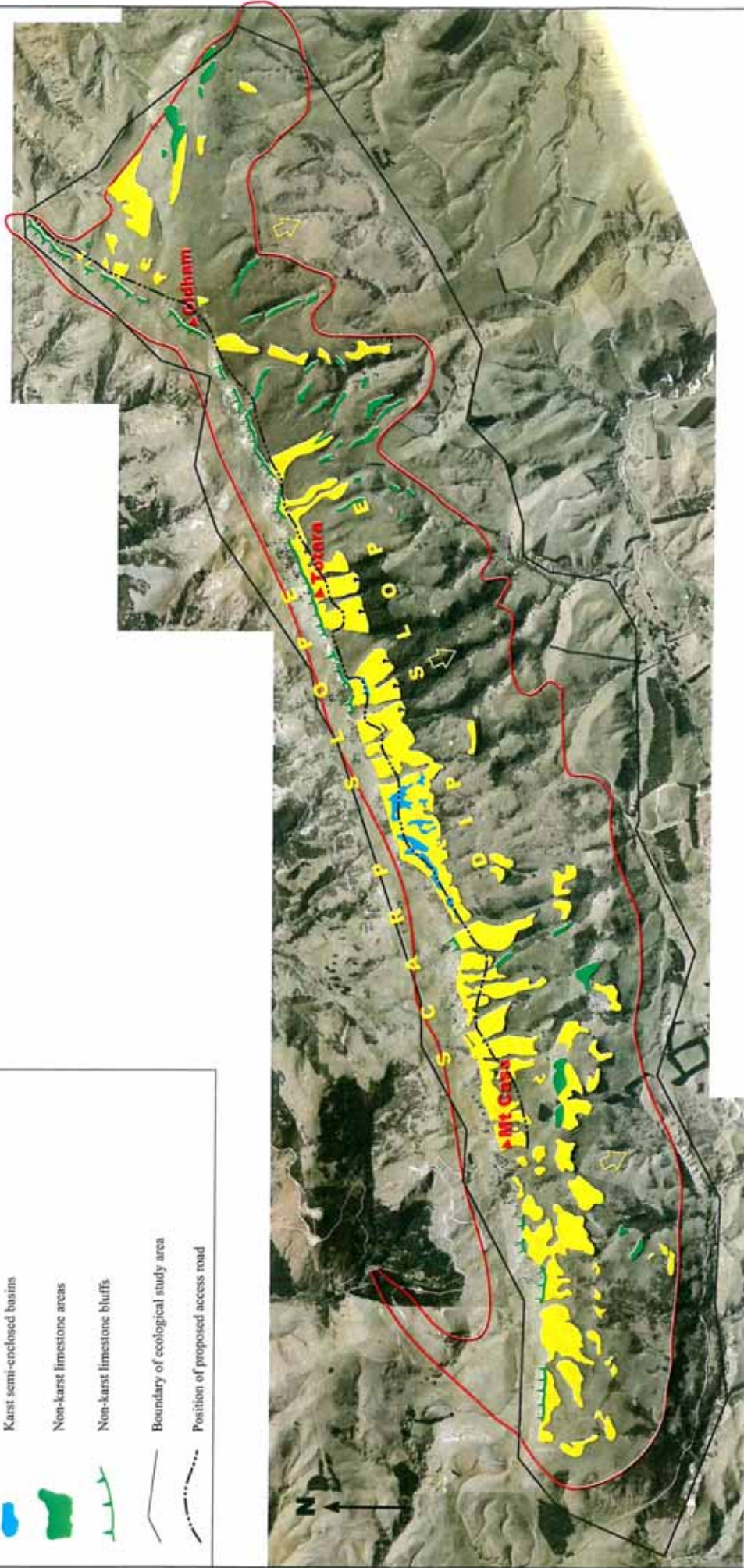


LEGEND

-  Approximate surface extent of limestone deposits.
- Weta Pass Stone and Amuri Limestone (after Wilson, 1963)
-  Karst pavement areas, with clint and gryke locally (shaded);
in association with limestone blocks
-  Karst semi-enclosed basins
-  Non-karst limestone areas
-  Non-karst limestone bluffs
-  Boundary of ecological study area
-  Position of proposed access road

**ATTACHMENT 1 OF 12
Riddolls Evidence**



VERSION 2

Riddolls Consultants Ltd



Proposed Mt Cass Windfarm, Waipara
Map of Selected Surface Limestone Features

Scale 0 1km

Sheet 1 of 1

October, 2008



Proposed Mt Cass Windfarm, Waipara

SW view over Mt Cass Ridge; limestone escarpment in foreground. Beyond, Weka Pass Stone underlies treed areas; eroded from grassed areas



October, 2008

ATTACHMENT 2 OF 12

Riddolls Evidence



Proposed Mt Cass Windfarm, Waipara

View of typical raised limestone pavement



October, 2008

ATTACHMENT 3 OF 12

Riddolls Evidence